



**CAI SAFETY
SYSTEMS™**
CUSTOM FALL PROTECTION SINCE 1997



Swing Arm Fall Protection System

Fall Protection Needs

Personnel
need to
work at
heights

There is an
overhead
crane that
must
remain
operational





Fall Protection Challenges

Long spans of coverage

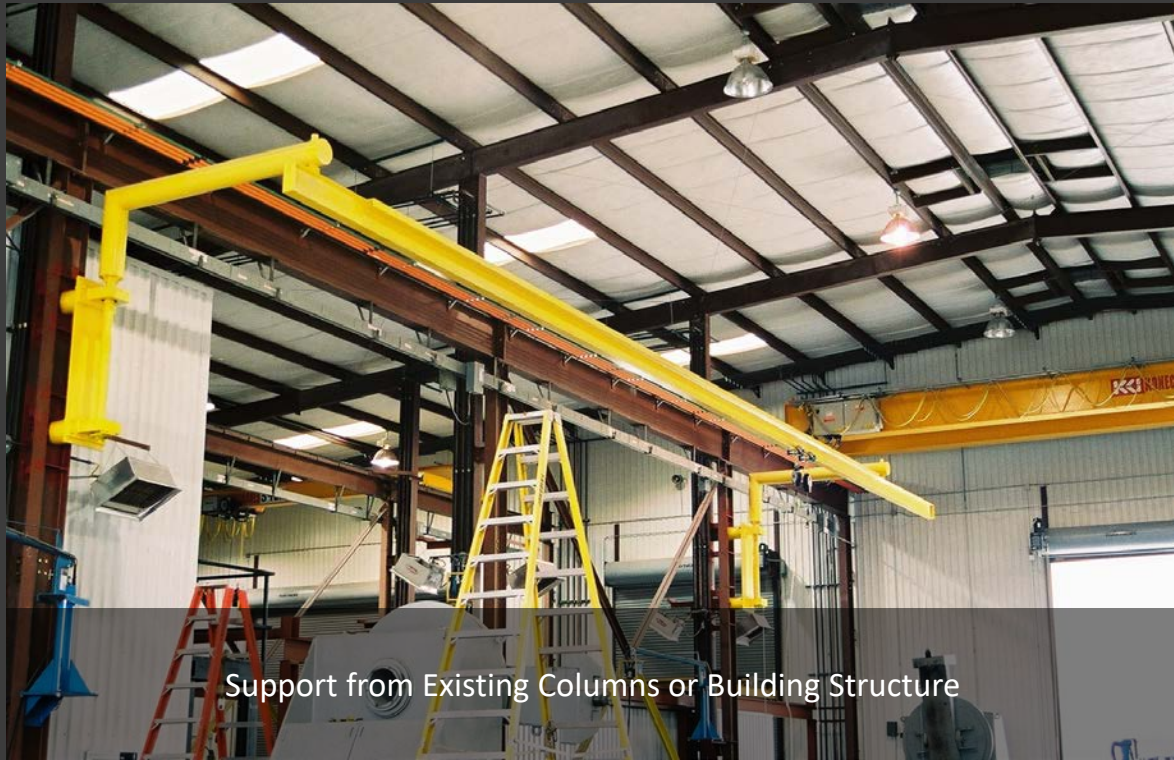
Limited space around work area to install additional structure

Time is of the essence

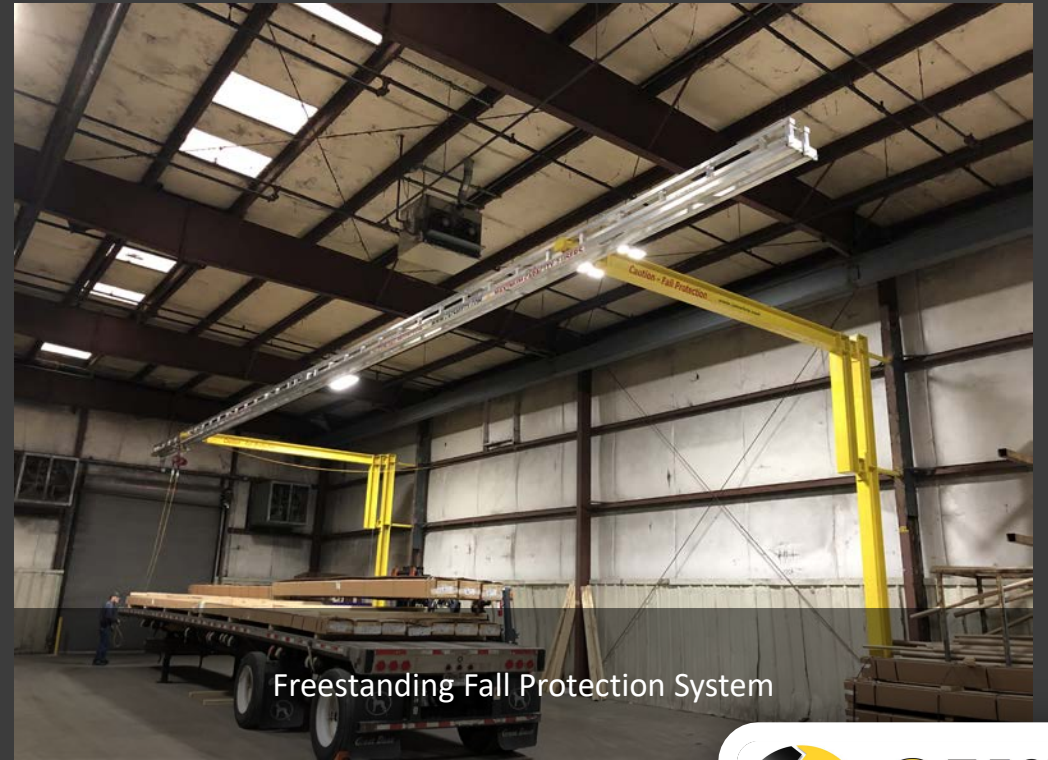
Height of work platform varies



Fall Protection Choices for Your Application

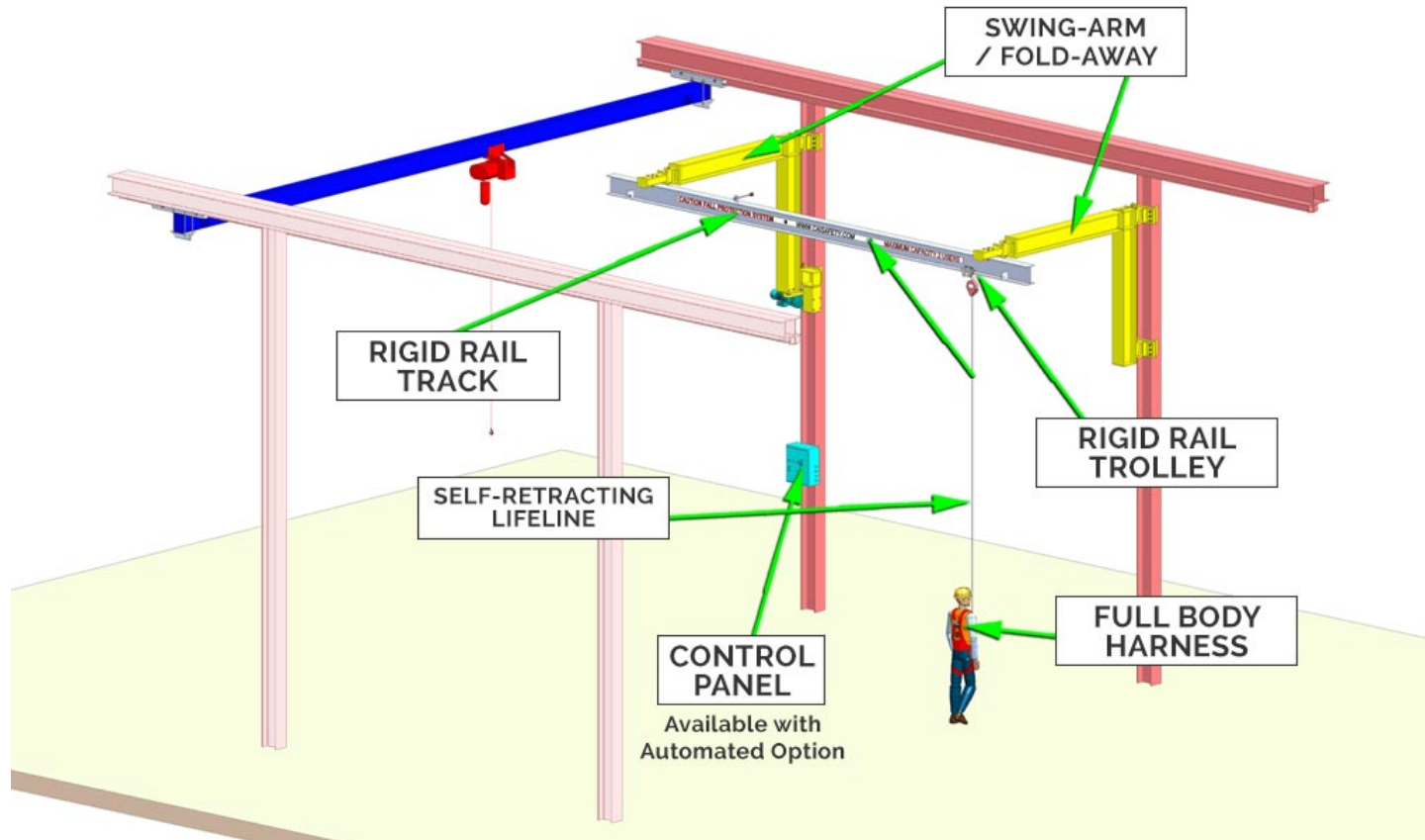


Support from Existing Columns or Building Structure



Freestanding Fall Protection System

System Components



Rigid Rail Track: This is an aluminum rigid track that runs the desired length to allow the user to have access to the work area.

Rigid Rail Trolley: A Trolley that is designed to glide over the rigid or cable horizontal lifeline system. This feature keeps the fall arrest system directly above the user to reduce the chances of a swing fall.

Self-retracting Lifeline: The Self-retracting Lifeline is utilized to reduce the arresting forces of the fall on the user and minimize the fall distance.

Control Panel: Allows user to safely and efficiently extend and retract the system with the turn of a button.

Swing-Arm/Fold Away: Allows the system to be extended when fall protection is required and retracted when access is required for overhead crane.

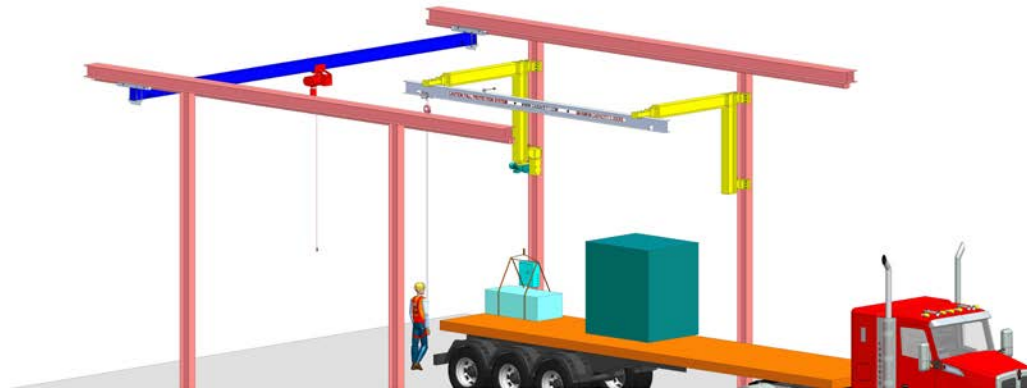
Full Body Harness: Only a full body harness can be used in a fall arrest system such as the freestanding fall protection system. The harness reduces the forces of the fall on the body and also keeps the user in an upright position when properly worn.

Typical Sequence of Operation – Step 1

The provided sequence is not intended to be a formal procedure for using the system. Consult with the project specific operation and maintenance manual provided with each system.

Lock out Overhead Crane away from work area

Position the work platform directly below the fall protection system and work within the system coverage area to reduce the possibility of swing falls



Typical Sequence of Operation – Step 2

Extend the Swing Arm System using the automated controller.

Supports productivity and safety



Typical Sequence of Operation – Step 3

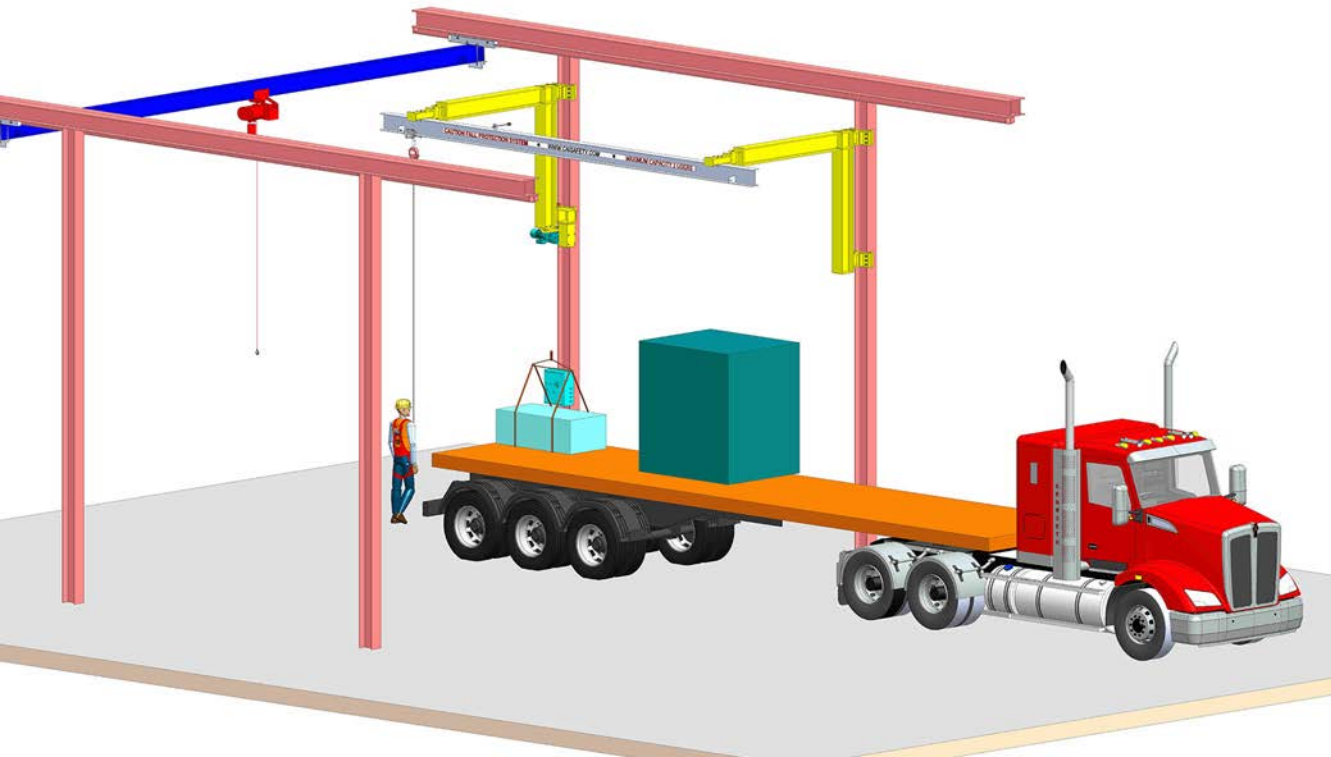
Watch the video below on how to
extend the Swing-Arm system



Typical Sequence of Operation – Step 3

Retrieve the Self Retracting
Lifelines and Tie-Off to dorsal ring
of full body harness

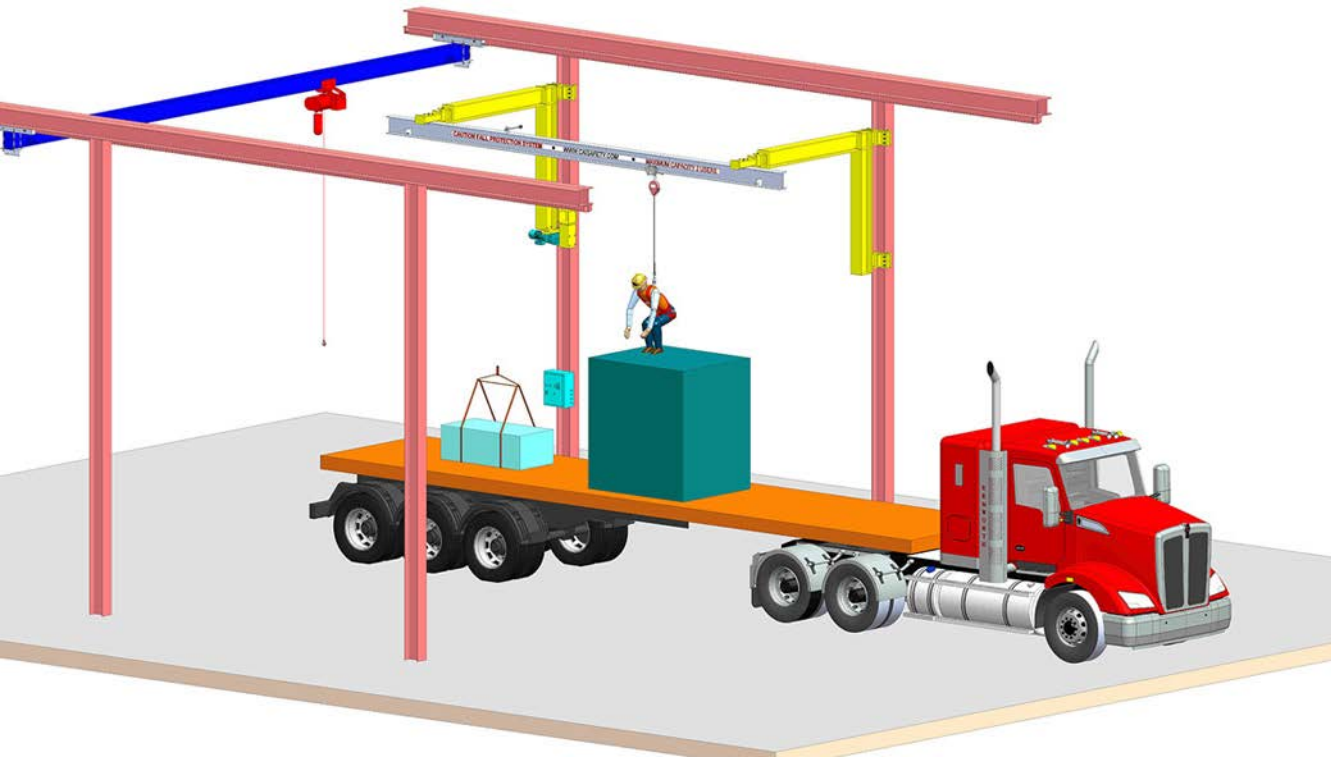
Safely Climb on top of work area



Typical Sequence of Operation – Step 4

After tie-off climb to the top of your work area and always work directly beneath the rigid track.

The trolley will keep the SRL directly above user to reduce possibility of a swing fall

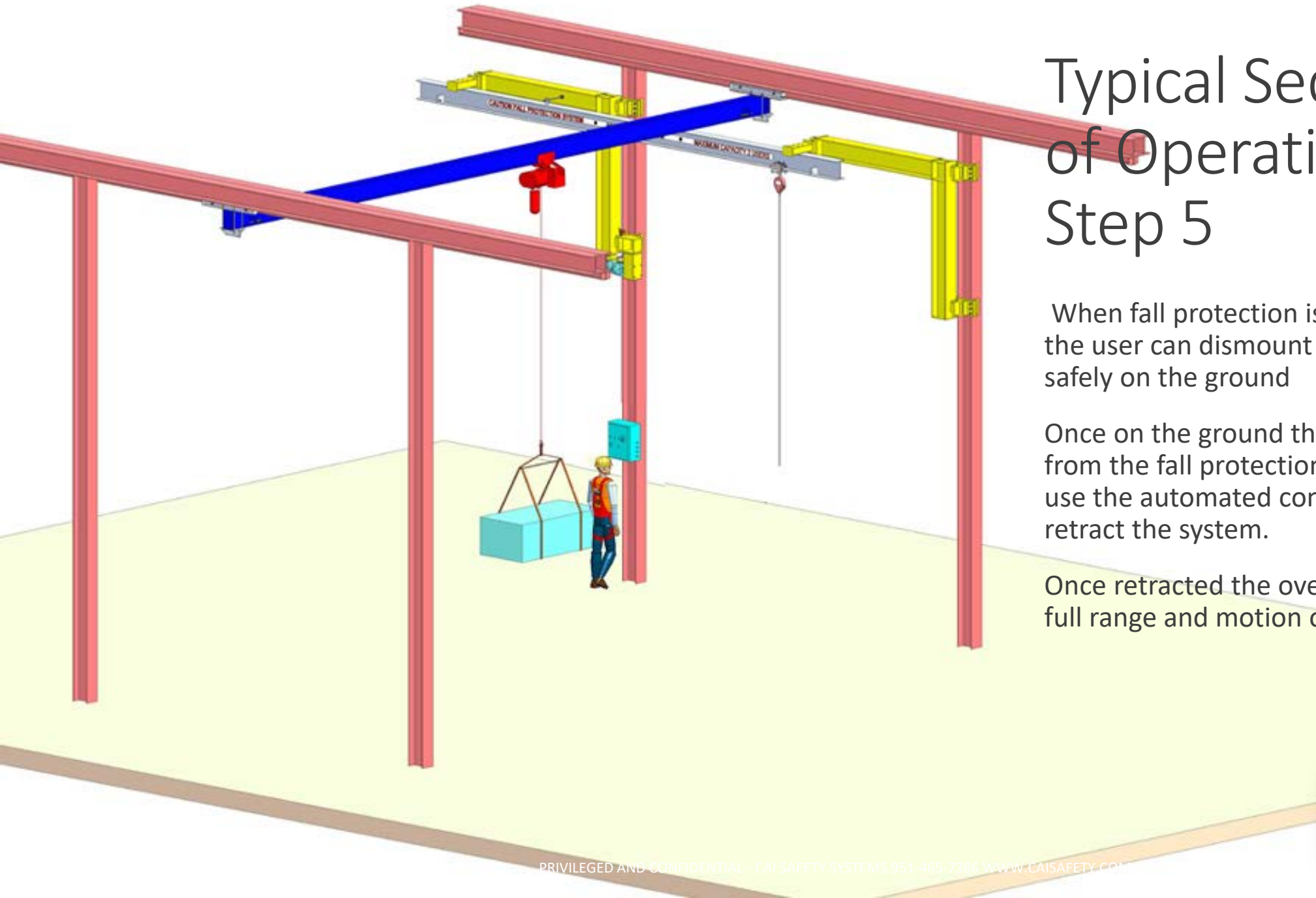


Typical Sequence of Operation – Step 5

When fall protection is no longer required the user can dismount while tied off until safely on the ground

Once on the ground the user can unattach from the fall protection system and then use the automated controller to safely retract the system.

Once retracted the overhead crane has full range and motion of the work area



Partial List of Clients

Dow
Chemical

United States
Gypsum

Georgia
Pacific

ADM

Burns and
McDonnell

Alcoa

Lockheed
Martin

Disneyland
Resort

United States
Navy

United States
Army

Waste
Management

LA Metro

JPL

US Coast
Guard

General Mills

UCLA





**CAI SAFETY
SYSTEMS™**
CUSTOM FALL PROTECTION SINCE 1997

Providing fall protection since 1997

Provide a turnkey approach

Provide solutions based on your application

Systems support Safety and Productivity

