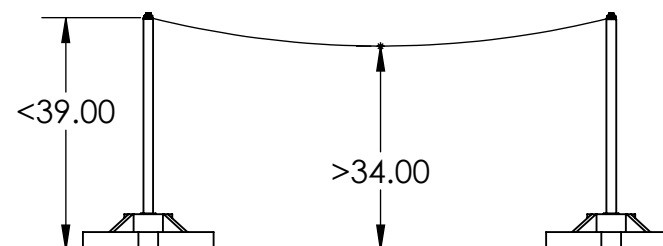
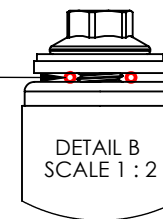
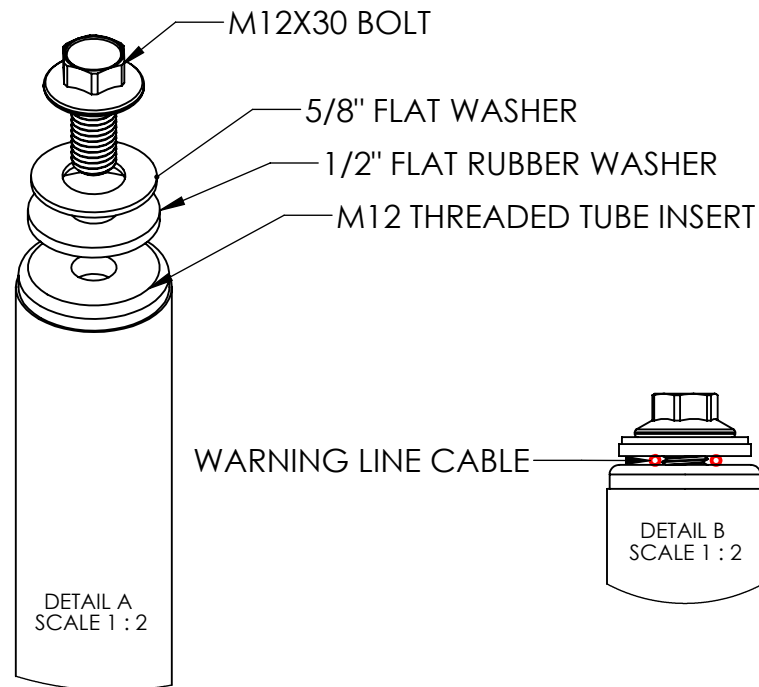
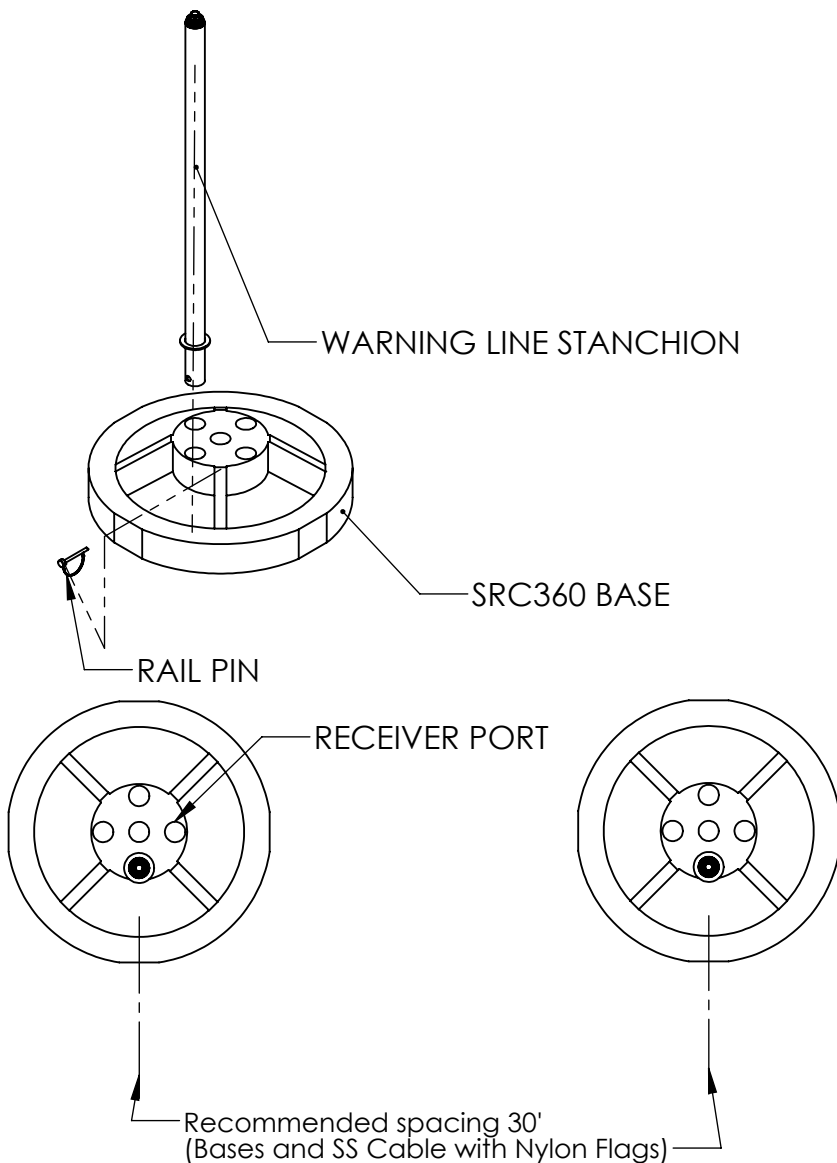


1. PLACE BASES AT REQUIRED INTERVALS
2. SLIP WARNING LINE STANCHION INTO ONE OF THE FOUR RECEIVER PORTS.
3. PIN THE STANCHION INTO PLACE
4. SLIP WARNING LINE CABLE BETWEEN THE TUBE INSERT AND RUBBER WASHER
5. TIGHTEN THE M12 BOLT UNTIL THE CABLE DOES NOT SLIP THROUGH.



TITLE:

WARNING LINE ASSEMBLY DIAGRAM

SIZE
A

DWG. NO.

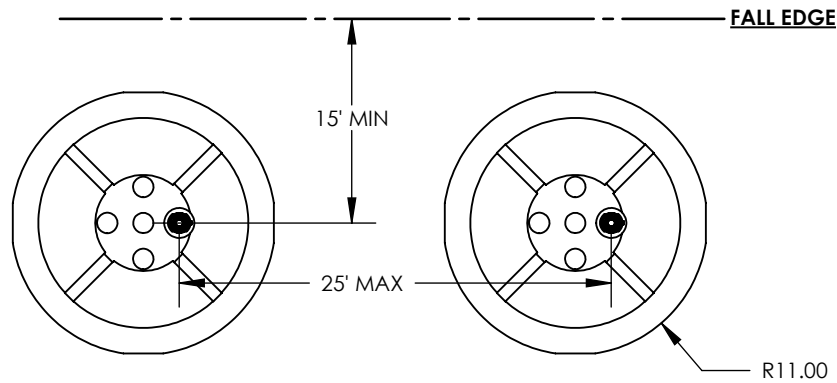
REV
E

SCALE: 1:16

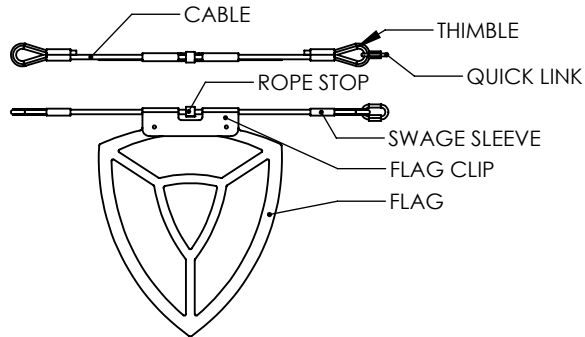
WEIGHT:

SHEET 1 OF 1

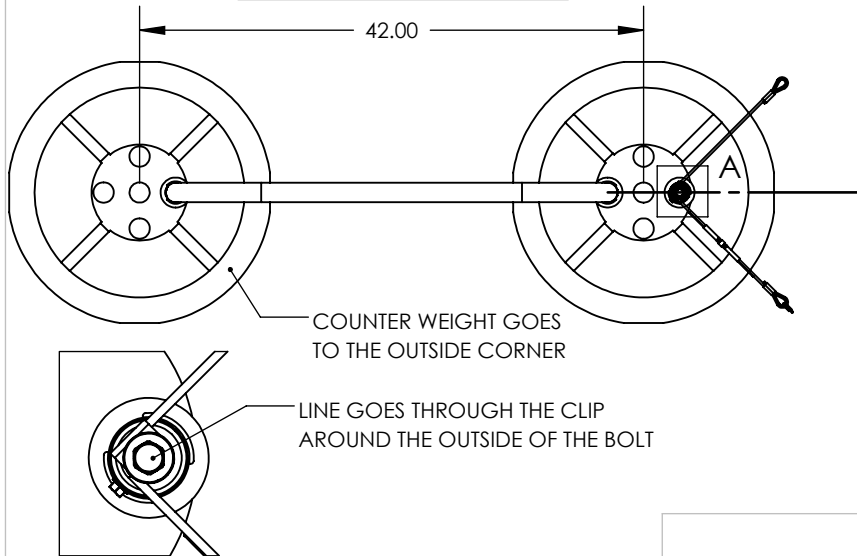
WARNING LINE POSITIONING



WARNING LINE COMPONENTS



TYPICAL WARNING LINE CORNER

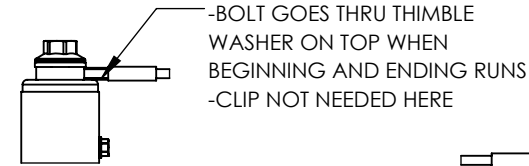


DETAIL A
SCALE 1 : 4

WIRE ROPE CLAMP INCLUDED WITH EACH 102' SEGMENT OF WARNING LINE

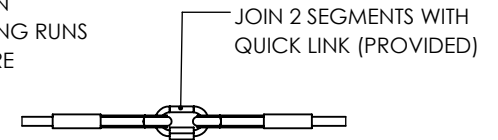
WHEN TERMINATING A RUN THAT FALLS SHORT OF THE THIMBLE ON THE END OF A 102' SEGMENT OF WARNING LINE; TRIM THE LINE WHERE THE RUN ENDS LEAVING 6" EXTRA CABLE. REMOVE THE THIMBLE FROM THE END THAT WAS REMOVED USE THE ROPE CLAMP AND THIMBLE TO CREATE A NEW END ON THE WARNING LINE AND ATTACH TO THE END STANCHION

START/END STANCHION CONNECTION



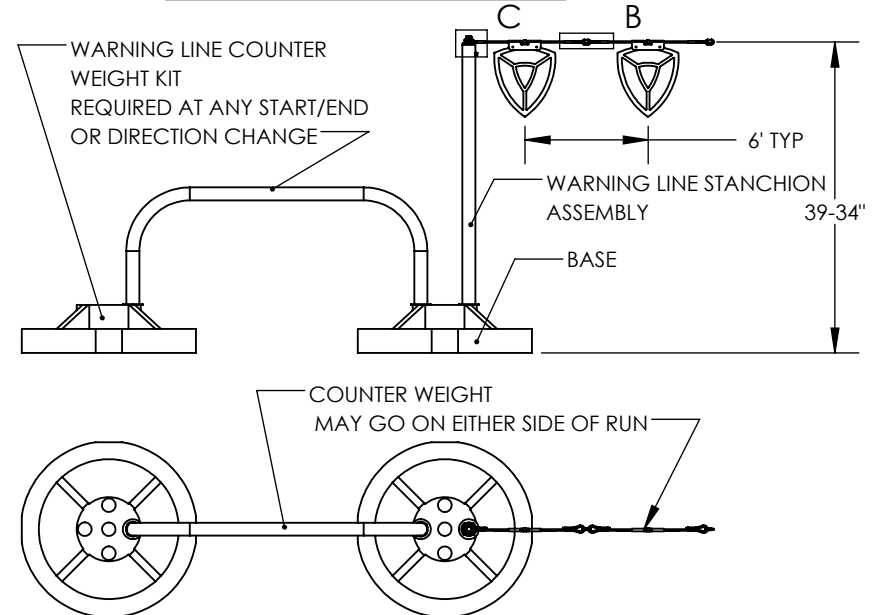
DETAIL C
SCALE 1 : 4

JOINING SEGMENTS



DETAIL B
SCALE 1 : 4

TYPICAL WARNING LINE RUN START/END



TITLE: WARNING LINE INSTALL DIAGRAM

SIZE DWG. NO.

REV

A

SCALE: 1:16 WEIGHT:

SHEET 1 OF 1