



# Hangar Horizontal Lifeline

## Custom Engineered Systems for Overhead Fall Protection

Aircraft / Hangar

### PRODUCT LITERATURE

CAI Safety System's engineers are adept at using your hangar structure to support a fall arrest system. We design an OSHA fall protection system comprised of a cable horizontal lifeline or rigid rail fall arrest system suspended from your overhead steel structure.

Our hangar mounted horizontal lifeline systems provide continuous coverage over aircraft fuselage and wingspans.



[LINK TO PRODUCT](#)



#### Fall Protection Challenge

Working on top of aircraft exposes personnel to a fall hazard which by law must be addressed. Working from man lifts or platforms does not provide the flexibility required getting the job done and having floor mounted anchors is not an option due to the possibility of contact with aircraft.



#### Fall Protection Solution

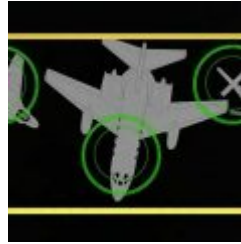
Our OSHA & ANSI compliant lifelines are available in cable and rigid track construction. The horizontal lifeline has a trolley that glides along the entire span to provide an anchor point directly on top of the work area. The entire system is mounted to the overhead hangar structure for the purpose of avoiding any interference with the operation of the aircraft.

# Features & Benefits



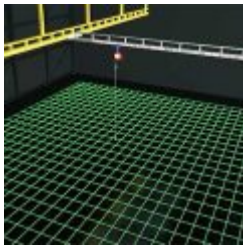
## CUSTOM HANGAR DESIGN

Our Expert Design Team will engineer a custom fall protection system that utilizes your existing Hangar structure and meets your aircraft, fuselage and wingspan fall protection needs. All fall protection drawings and design calculations will be stamped by a Professional Engineer (PE).



## FLEXIBILITY

The type of system we propose is only defined by your needs not by any limitation on our part. On aircraft hangar projects we have successfully provided cable and aluminum rigid rail horizontal lifelines as well as single point anchors.



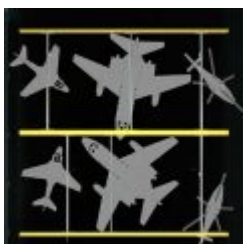
## FALL ARREST RATED

In the event of a fall the self-retracting lifeline stops the fall and minimizes the forces generated by the fall to a minimum on the body of the user and keeps the fall distance to a minimum.



## RETRIEVAL SYSTEM

When using our tagline system the user is able to access the fall protection Self-Retracting Lifeline while safely on the ground. Once safely tied off the user can begin to access the aircraft work area. Taglines are offered in manual and automated options.



## USER-FRIENDLY

The system trolley is manufactured to glide hands free on the overhead rigid track or cable. This keeps the anchoring device directly above the user to reduce the chances of a swing fall. The trolley and self-retracting lifeline gives the user the flexibility of movement over the aircraft.



## FALL PROTECTION TRAINING

Training is an important aspect of our aircraft fall protection approach. Our knowledgeable and dedicated trainers will instruct the user on the regulations, correct use, and proper maintenance of the fall protection system. Our classes are comprehensive and tailored to your specific aircraft hangar horizontal lifeline system and use.

# Aluminum Rigid Track System (ART)



## ALL ALUMINUM DESIGN

Foreign Object Debris (FOD) and maintenance costs are reduced using strong aluminum structures. Painting and decoration are optional and do not affect the structure.



## INSTALLATION BENEFITS

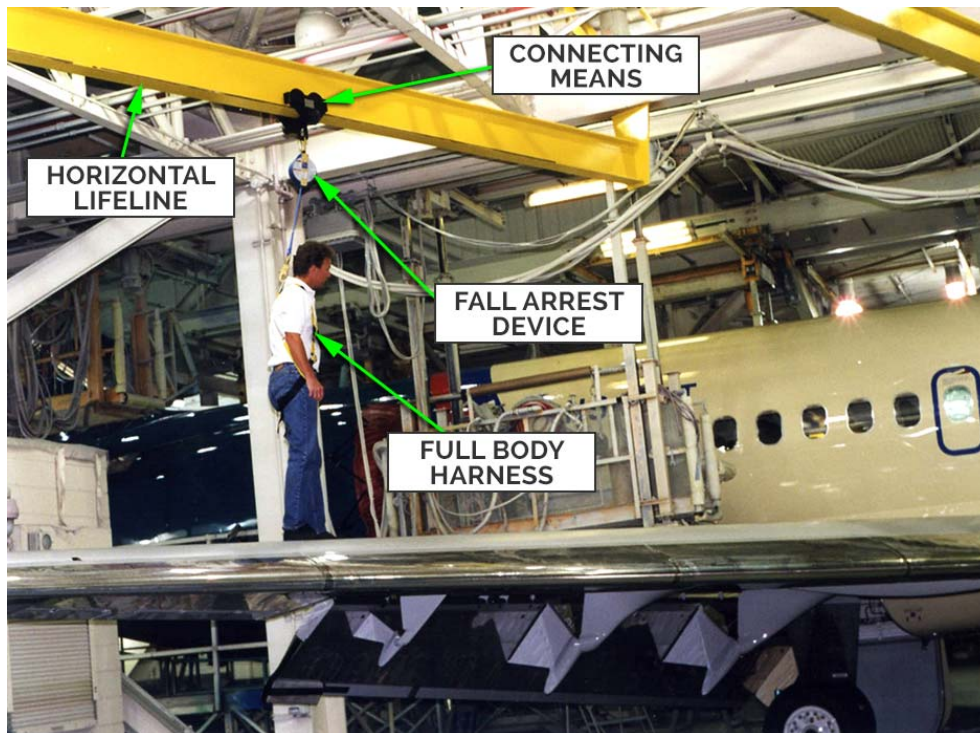
Handle parts with ease;  
Mounting can be customized;  
Excessive hardware is removed



## SINGLE & DUAL TRACKS

Single Tracks can be used for up to 20 feet between supports;  
Dual Tracks can be used for up to 40 feet between supports.

## Description and Use



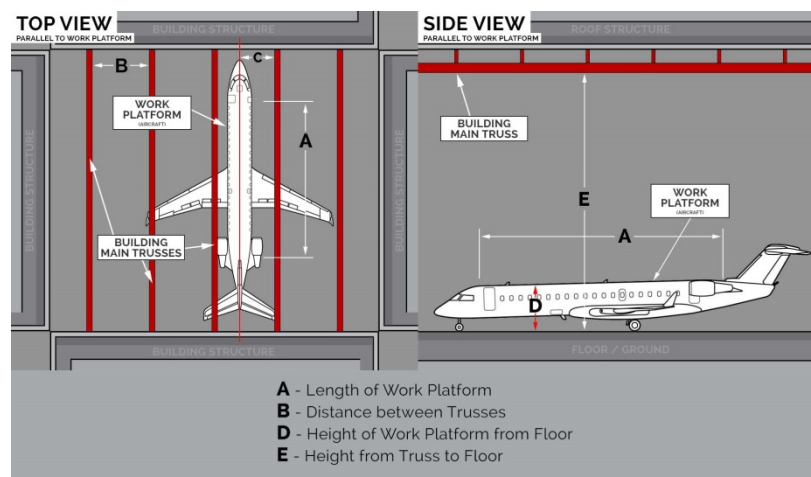
*(click image to enlarge picture)*

- **Fall Arrest Horizontal Lifeline:** The rigid track or cable Horizontal Lifeline provides an overhead means of tie-off to reduce the chances of a swing fall and fall distance. This lifeline runs the desired length to allow the user to have access to the work area.
- **Connecting Means:** A trolley that is designed to glide over the rigid or cable horizontal lifeline system. This feature keeps the fall arrest system directly above the user to reduce the chances of a swing fall.
- **Fall Arrest Device:** The self-retracting lifeline is utilized to reduce the arresting forces of the fall on the user and minimize the fall distance.
- **Full Body Harness:** Only a full body harness can be used in a fall arrest system such as the freestanding fall protection system. The harness reduces the forces of the fall on the body and also keeps the user in an upright position when properly worn.

## System Layout

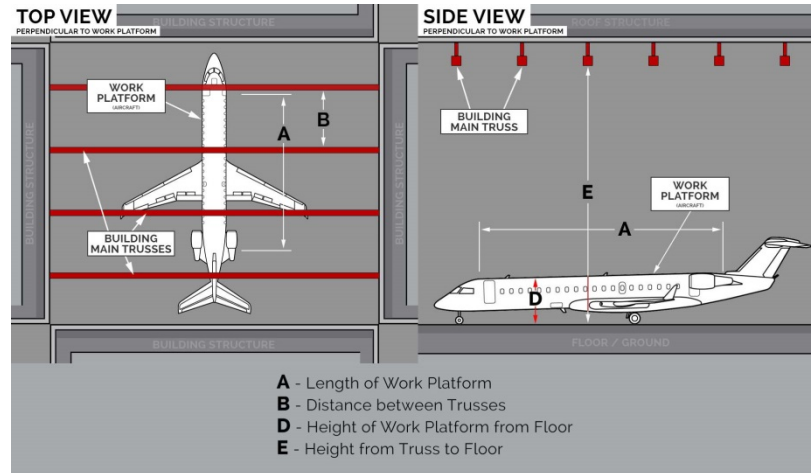
The layout of your existing structure will define how the fall protection system will get anchored from your overhead building structure. Below are two illustrations showing a Parallel and perpendicular layouts along with information that will help us understand and put together a proposal for you. Do not hesitate to call us if you have any questions concerning the layouts described below.

### Parallel to Work Platform



[Link to illustration.](#)

## Perpendicular to Work Platform



[Link to illustration](#)

## Information Needed to Quote

By providing some basic information we can provide you with a custom proposal. Pictures and sketches are very helpful and if you prefer to speak with a fall protection expert just call or send us an e-mail. **Fill out our [Request a Quote](#) form to send us your information.**

- Length of coverage area
- Type of vehicle or equipment that you need to work on
- Number of users

## After Sales Support Services

CAI Safety Systems will continue to support you after your system has been installed and is in use. We can provide annual inspection, training, updating user equipment and rescue systems.

Visit our [Services](#) and [Training Agenda](#) for more information.



Phone: (888) 246-6999

Website:

<https://caisafety.com>

Email:

[info@caisafety.com](mailto:info@caisafety.com)  
[webstore@caisafety.com](mailto:webstore@caisafety.com)

## Some of Our Clientele



BURNS & MCDONNELL



FLUOR

