



Fixed Mounted Guardrails

with Fixed Bracket Mounts

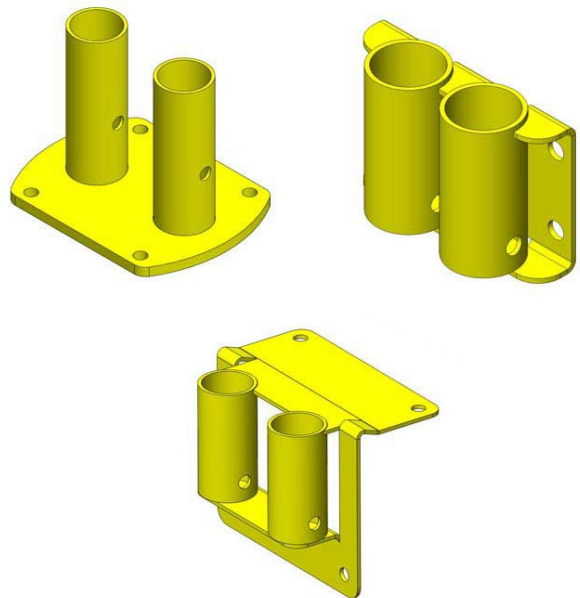
Loading Dock / Loading Bays / Rooftops



PRODUCT LITERATURE

CAI Safety Systems offers permanent safety guardrails for fall protection that comes in different lengths and mounting options to address worksite needs. Our Fixed Mounted Guardrails are ideal choices for fall prevention at loading docks, roof parapet walls and many other leading-edge hazards.

Our OSHA compliant fixed guardrail system can be top or side mounted to your surface. A variety of finishes are also available along with safety gates to allow for safe access.



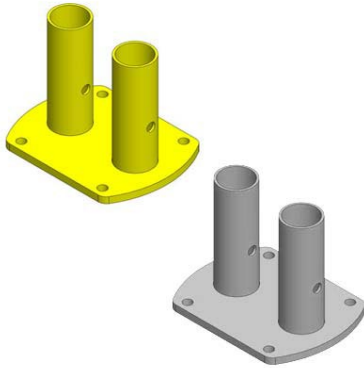
[LINK TO INFO & PRICING](#)

Features & Benefits

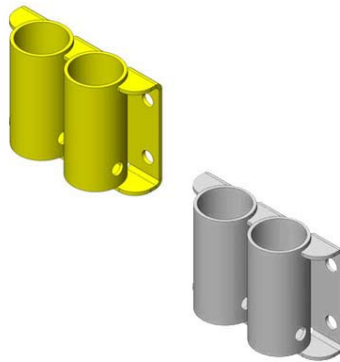
- Powder-coated safety yellow for visibility and high corrosion resistance.
- Meets and exceeds OSHA regulations for fall protection. Tested and independently certified to be in accordance with OSHA fall protection for guardrail regulations.
- **OSHA Regulations** – 29 CFR 1910.23, 29 CFR 1926.502
- **Cal-OSHA Regulations** – 1620, 1621, 1633, 3209, 3210, 3211, 3212, 3213, 3214
- **WA-OSHA Regulations** – [WAC 296-24-75011](#)
- Simple installation — prefabricated railing sections means no custom fabrication of guard rails.
- Railing will be 42" tall in the base. Railing length is available in 1-foot increments ranging from 2 feet to 10 feet, measured to the center of each leg.
- Highly effective as hazard barriers. Commonly used at dock doors and truck pits, warehouse traffic lanes, construction excavation sites, new building construction, mezzanines, pier and rail yards, crowd control, and more.
- American Welding Society certified welders ensure the highest standard of quality construction.
- **FINISHES** : Powder Coated Safety Yellow, Galvanized
- **MOUNTING TYPES** :
 - Double Brackets & Single Brackets: Top Floor Mount, Side Flush Mount, Wrap-Over-Edge Mount. Single Mounts are also used as Finishing Kits.
- **FIXED RAIL LENGTHS** : Standard/Pit Rails: 10", 9", 8", 7.5", 7", 6", 5", 4", 3", 2"
- **ADJUSTABLE RAIL LENGTHS** : Standard Rails Only: 3ft. to 5ft., 6ft. to 10ft.
- **FINISHING RAIL LENGTHS** : Standard/Pit Rails: 10", 9", 8", 7.5", 7", 6", 5", 4", 3", 2"
- **TOEBOARD LENGTHS** : Standard/Pit Toeboards: 10", 9", 8", 7.5", 7", 6", 5", 4", 3", 2"
- **FINISH TOEBOARD LENGTHS** : Pit Rails Only: 10", 9", 8", 7.5", 7", 6", 5", 4", 3", 2"

Types of Brackets

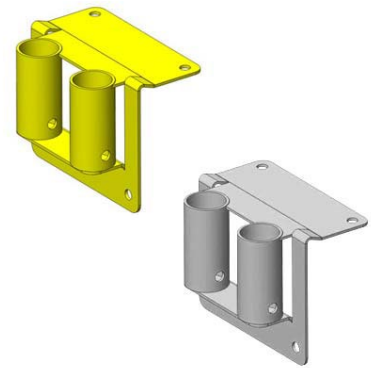
Double Mounts



Double
'Top Floor Mount'

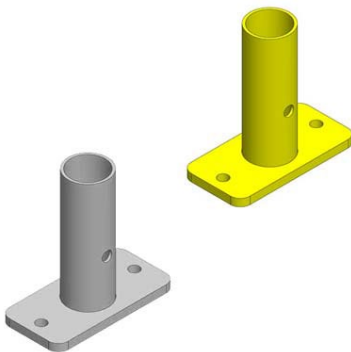


Double
'Side Flush Mount'

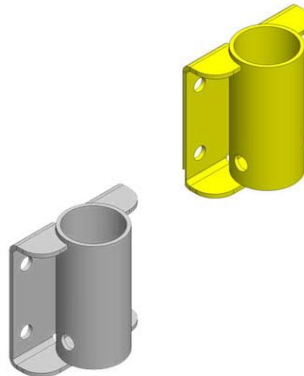


Double
'Wrap-Over-Edge Mount'

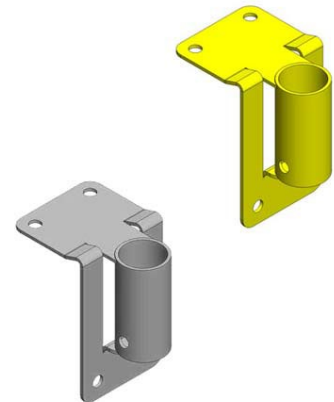
Single Mounts (a.k.a. Finishing Kit)



Single
'Top Floor Mount'



Single
'Side Flush Mount'



Single
'Wrap-Over-Edge Mount'

Selections Explained

Visit the [product page](#) to calculate pricing based on the system requirements:

\$0.00

Total Length of System (ft.): **0**

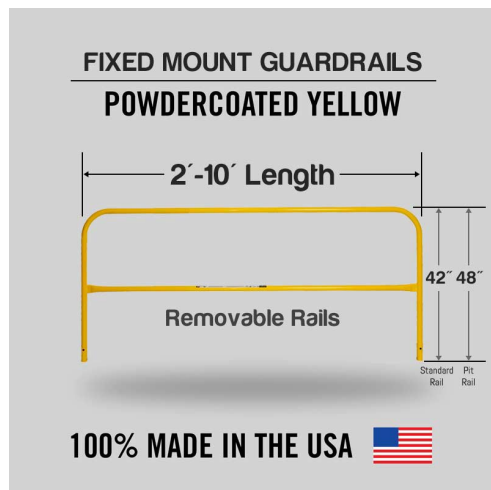
Finish	Powder Coated Safety Yellow
Type of Double Mounts	Top Floor Mount
10 ft. rail (Fixed length) NOT "CAL-OSHA" COMPLIANT **	0
9 ft. rail (Fixed length) NOT "CAL-OSHA" COMPLIANT **	0
8 ft. rail (Fixed length)	0
7.5 ft. rail (Fixed length)	0
7 ft. rail (Fixed length)	0
6 ft. rail (Fixed length)	0
5 ft. rail (Fixed length)	0
4 ft. rail (Fixed length)	0
3 ft. rail (Fixed length)	0
2 ft. rail (Fixed length)	0
Finishing Kit ** (required for open end systems)	0

ATTENTION! Please make sure that you have added Finishing Kit(s) to your selection. Failure to order these will end up with end rails not having any bracket installed. Refer to tab 'Finishing Kits' below.



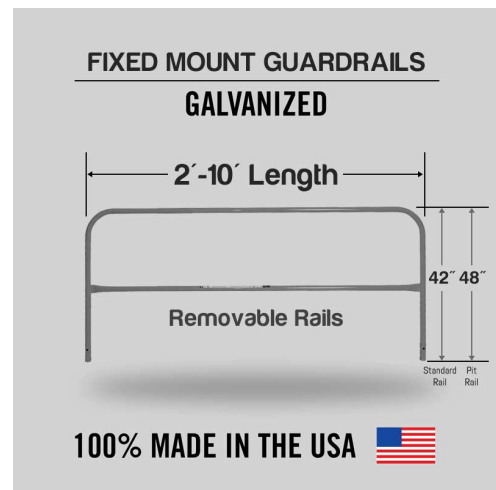
To help you make the right choices, we have compiled below an explanation for how you can select parts and configure your system. You can calculate options and pricing at this [link](#).

STEP 1 – CHOOSE A FINISH



(click to enlarge)

Powder Coated Safety Yellow



(click to enlarge)

Galvanized

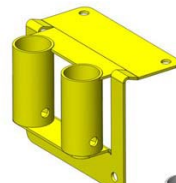
STEP 2 – CHOOSE TYPE OF DOUBLE MOUNT



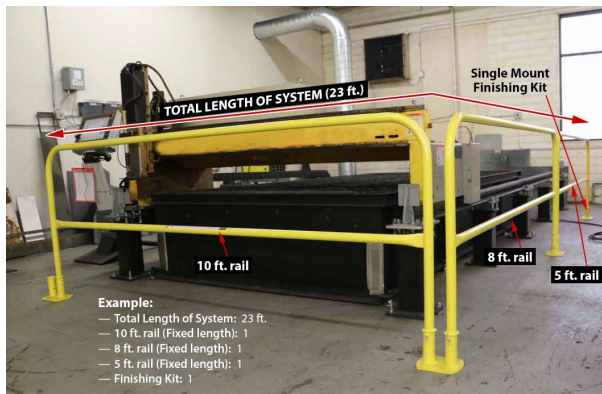
Top Floor Mount



Side Flush Mount



Wrap-Over-Edge Mount



(click to enlarge)

STEP 3 – CHOOSE NUMBER OF RAILS & LENGTHS

- Calculate the Total Length of System (in ft.)
- Decide how many rails and length of rails you require to cover the total span of your system from start to end (refer to pic on the left)
- As per OSHA regulations in some states such as California (CA) and Washington (WA), posts must be spaced not more than 8 feet (96 inches or 2.44 meters) on centers. Please choose rails no more than 8ft. in length if you are installing this system in these states.
- Into the boxes provided, enter the total number of rails required as per rail lengths decided.
- Rail lengths from 2ft. to 10 ft. provided.
- For adjustable rails, please purchase individually [here](#).

STEP 4 – CHOOSE FINISHING KIT(S)

If the guardrail system is going to have an open end, **you must install** a Finishing Kit. The finishing kit shown below will provide you with the Single Mounts to close these open ends. For a single system run with one open end, you will need (1) finishing kit.



Top Floor Mount
Finish Kit
(Single Mount)

BUY INDIVIDUALLY



Side Flush Mount
Finish Kit
(Single Mount)

BUY INDIVIDUALLY



Wrap-Over-Edge Mount
Finish Kit
(Single Mount)

BUY INDIVIDUALLY



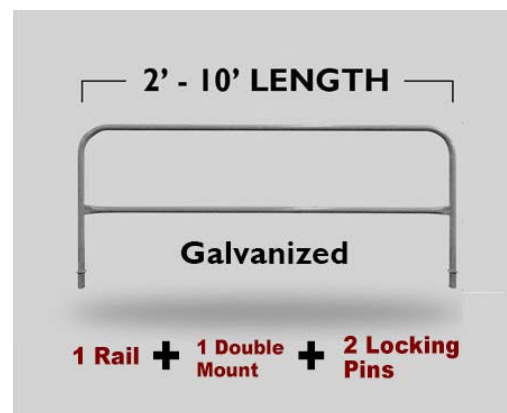
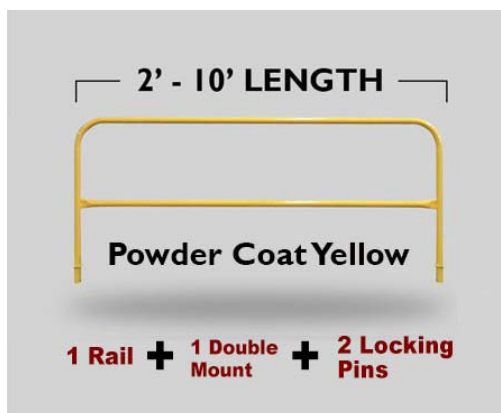
Correct Usage & Specifications

Below is only an excerpt of the requirements for use. Please refer to the [Manufacturer's User & Instruction Manual](#) in the 'Downloads' tab on our [website](#) to find full and complete information about the Fixed Mounted Guardrail system.

CORRECT USAGE, COMPLIANCE & COMPARISON (!! IMPORTANT !!) :

	Cal-OSHA Regulations	WA-OSHA Regulations	Federal OSHA Regulations
Maximum Post Spacing	8ft.	8ft.	10ft.
Wind-Load Return Required	No	No	No
End Return Rails (Finishing Kits)	No	No	No
Roof Parapet Required	No - Top Mount Yes - Side & Wrap-over-edge Mount	No - Top Mount Yes - Side & Wrap-over-edge Mount	No - Top Mount Yes - Side & Wrap-over-edge Mount
Compliance Codes	Cal-OSHA Title 9, 1620 and 3209	WA-OSHA WAC 296-24-75011	OSHA 1910.29 and 1926.502

- Each Fixed Rail component you choose comprises of:
 - (1) rail (preferred finish), (1) double mount bracket (preferred finish), (2) locking pins

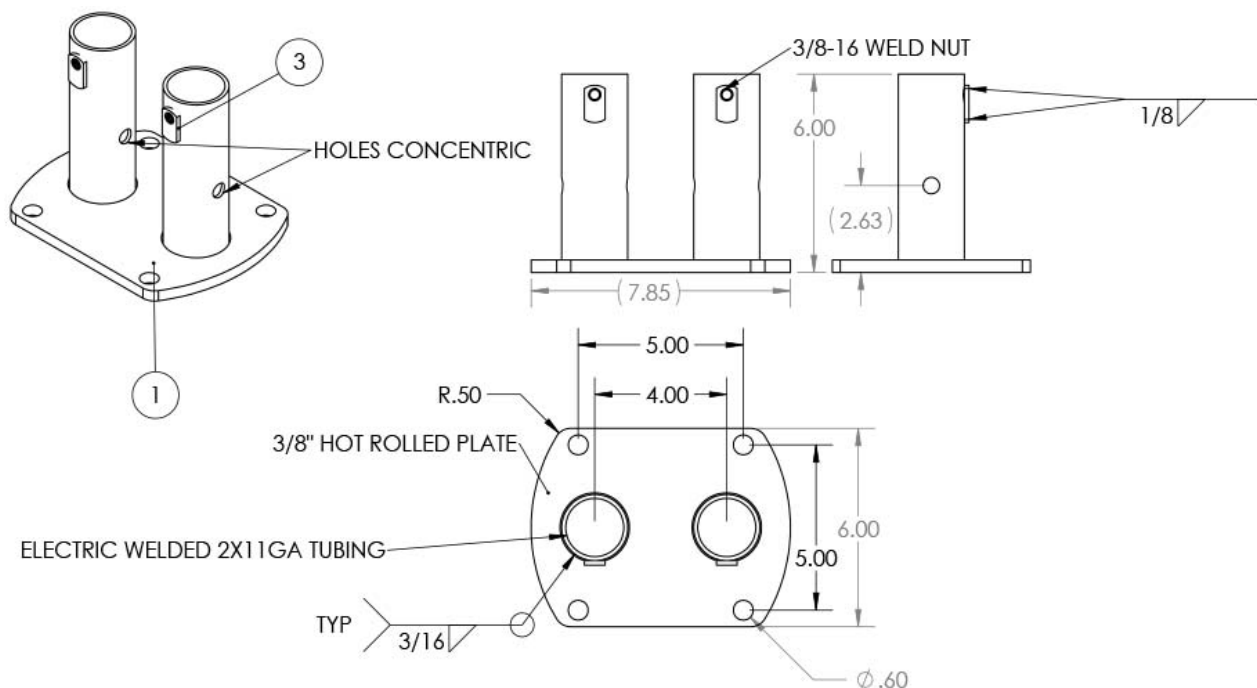


- Double mounts, Single mounts, Individual Rails, Finish Rails, and Toeboards can be purchased separately in the 'Accessories' tab on the [product page](#) or [here](#).
- Single mount brackets are used as a Finishing Kit for your system to close open ends. Please refer to the 'Finishing Kits' tab on the [product page](#).
- Toeboards are not included with this system and can be purchased separately in the 'Accessories' tab on the [product page](#) or [here](#).

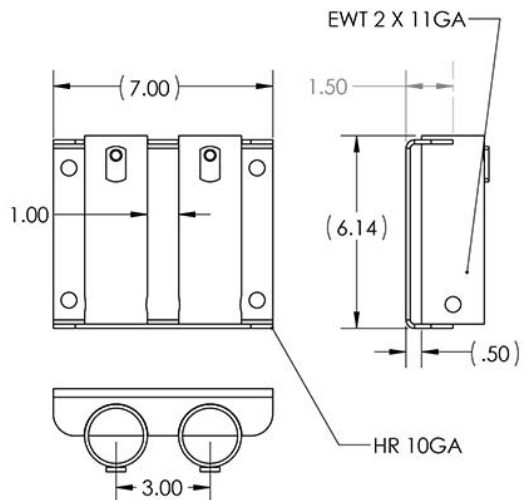
- 3/8 x 2.5" expansion anchor bolts may be used to anchor the bracket to your application. You may also use 3/8 x 2.75" expansion anchors depending on the which bolt works best with your application.
- Please note that Anchor bolts for securing the Mount/Bracket to your application are not included with this system. Instructions have been provided in the user manual
- 3/8 x 2.5" expansion anchor bolts may be used to anchor the bracket to your application. You may also use 3/8 x 2.75" expansion anchors depending on the which bolt works best with your application.

Double Mount/Bracket Dimensions

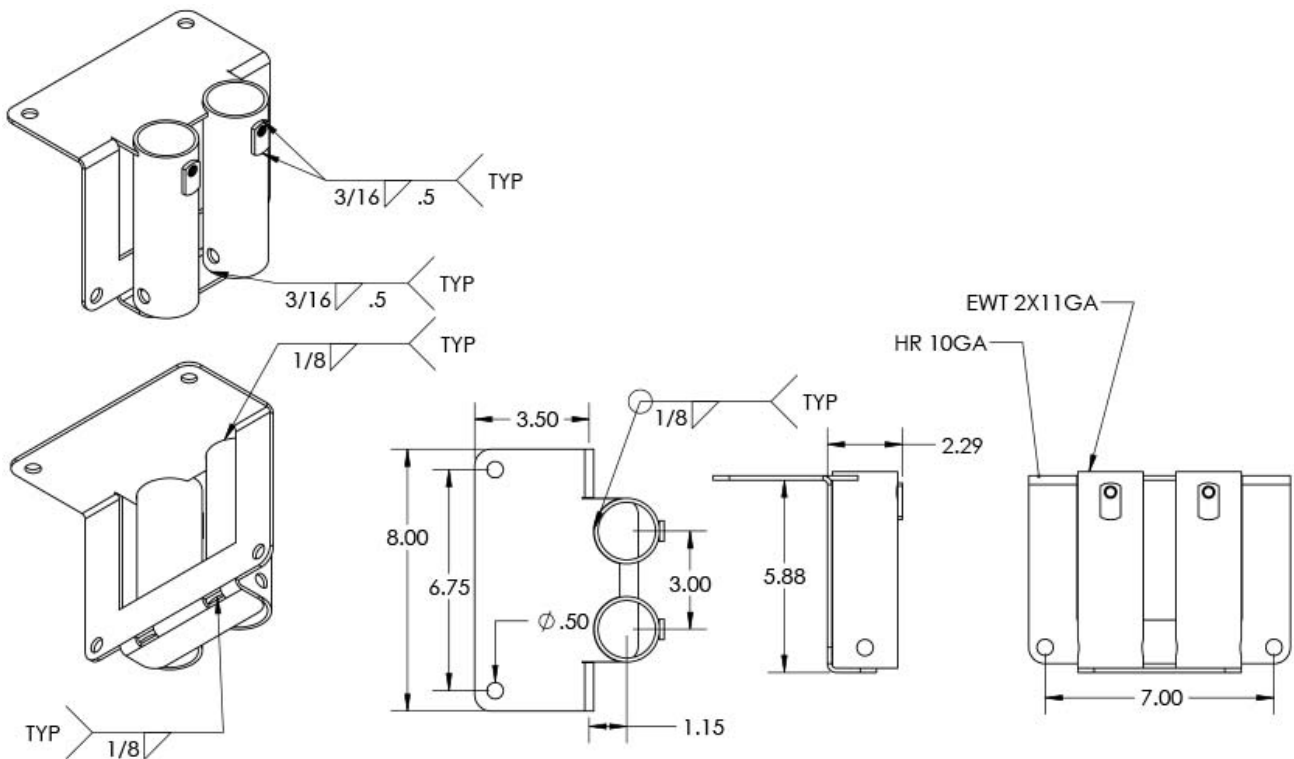
Double Top Floor Mount ([Download PDF](#))



[\(Download PDF\)](#)

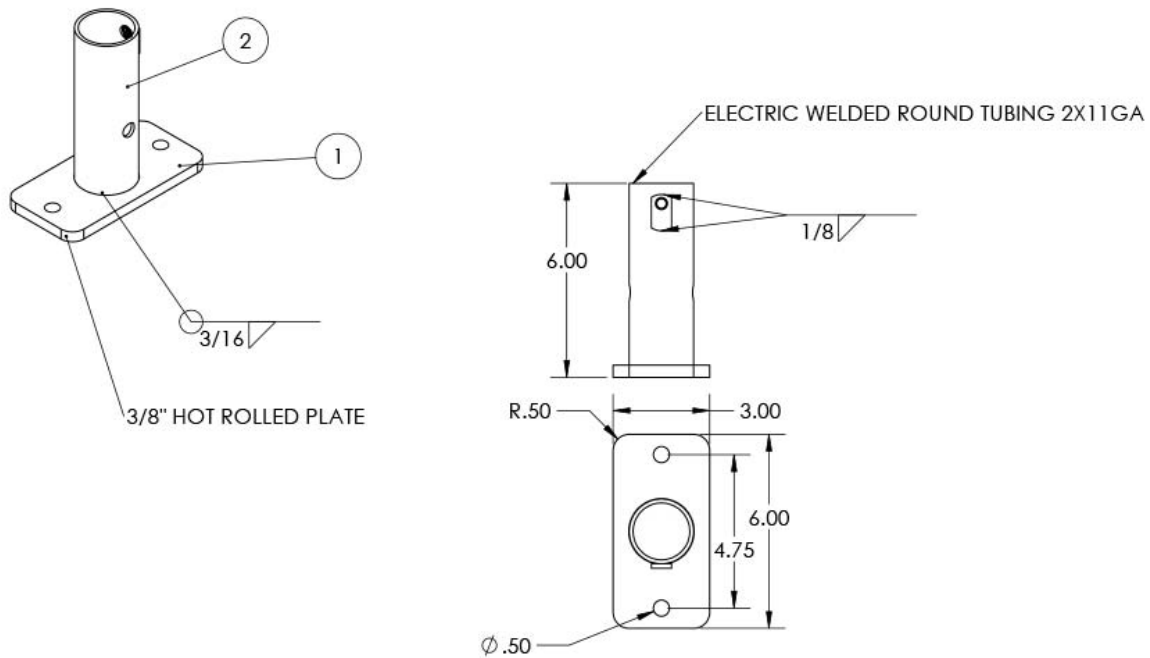


Double Wrap-Over-Edge Mount ([Download PDF](#))

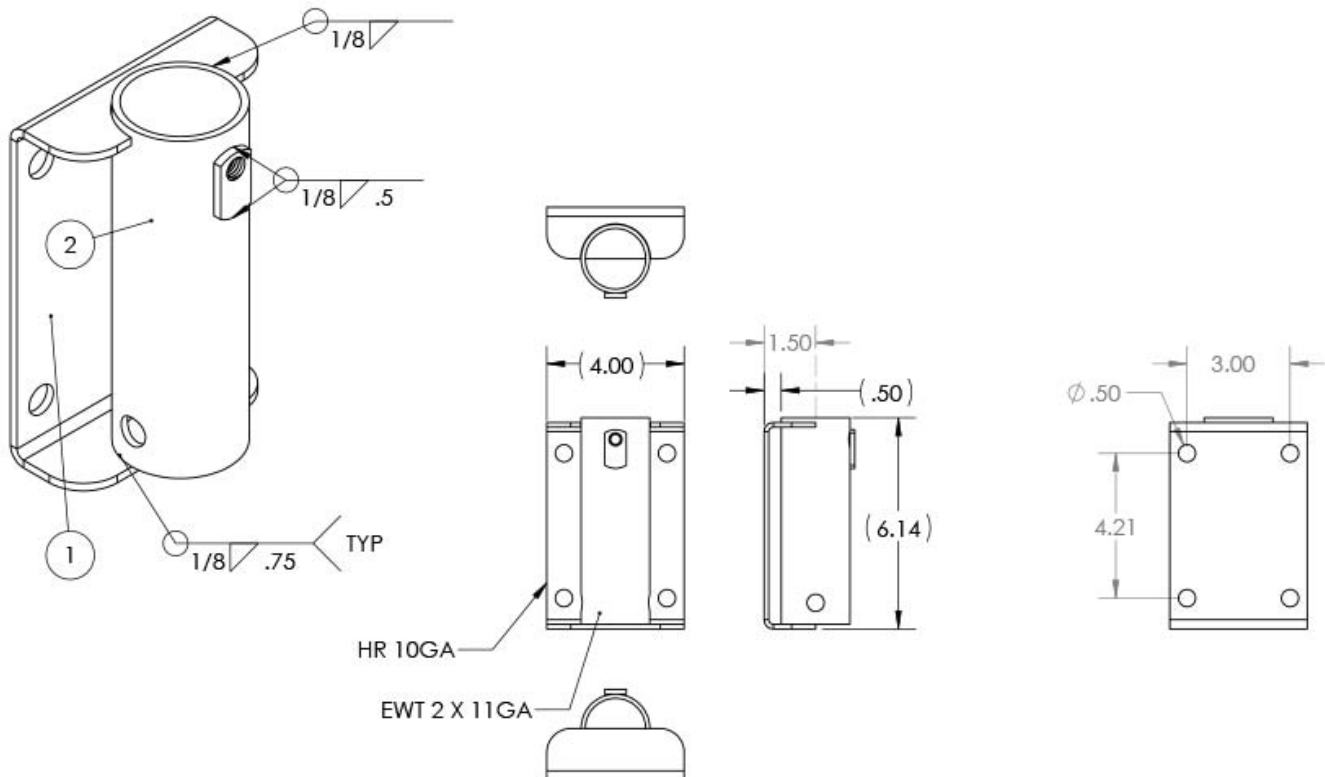


Single Mount/Bracket Dimensions

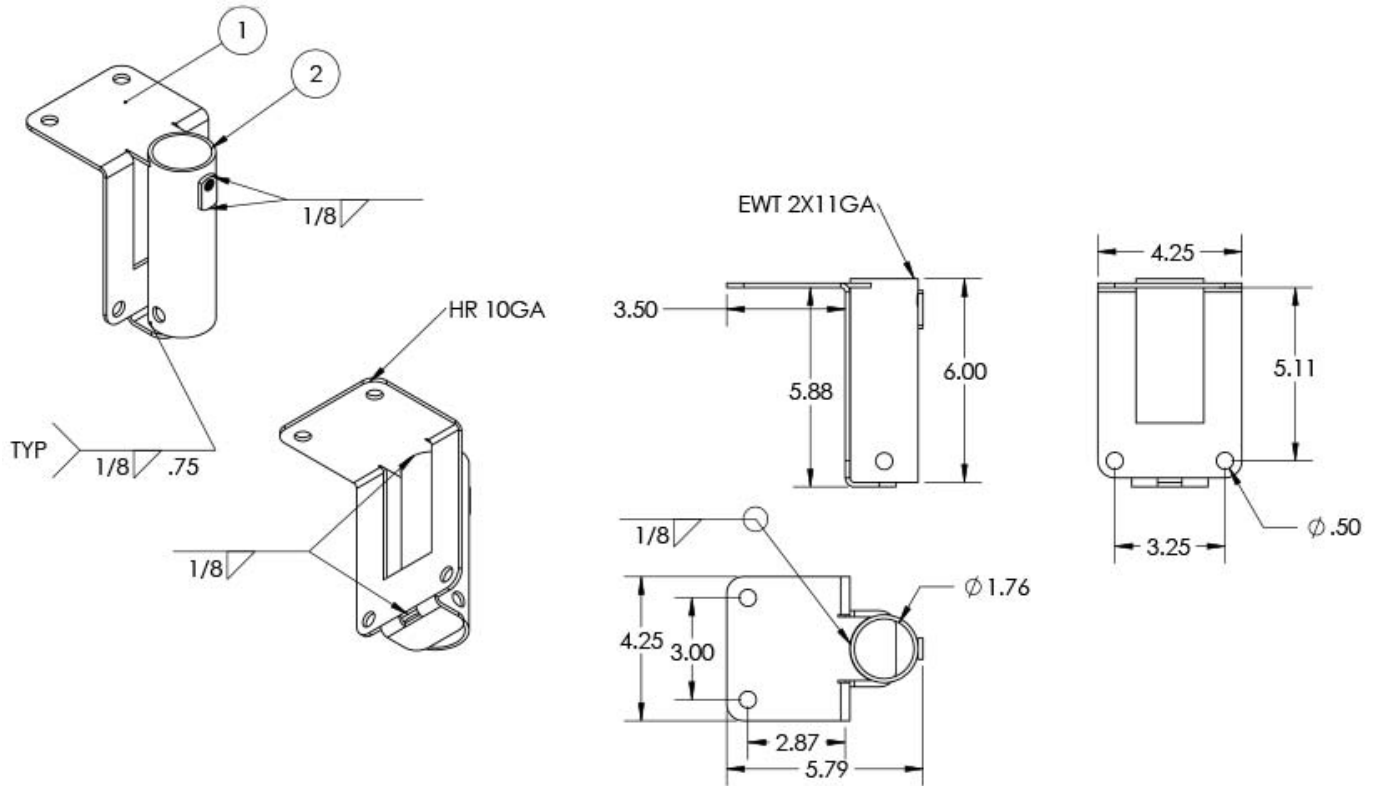
Single Top Floor Mount ([Download PDF](#))



Single Side Flush Mount ([Download PDF](#))



Single Wrap-Over-Edge Mount ([Download PDF](#))



Rail Lengths, Finishes & Mount Types

Rail Length	Type of Finishes	Type of Mounts/Brackets
10 ft. Standard/Pit Rail	Powder Coated Safety Yellow Galvanized	Double Top Floor Mount Double Flush Mount Double Wrap-Over-Edge
9 ft. Standard/Pit Rail	Powder Coated Safety Yellow Galvanized	Double Top Floor Mount Double Flush Mount Double Wrap-Over-Edge
8 ft. Standard/Pit Rail	Powder Coated Safety Yellow Galvanized	Double Top Floor Mount Double Flush Mount Double Wrap-Over-Edge
7.5 ft. Standard/Pit Rail	Powder Coated Safety Yellow Galvanized	Double Top Floor Mount Double Flush Mount Double Wrap-Over-Edge
7 ft. Standard/Pit Rail	Powder Coated Safety Yellow Galvanized	Double Top Floor Mount Double Flush Mount Double Wrap-Over-Edge
6 ft. Standard/Pit Rail	Powder Coated Safety Yellow Galvanized	Double Top Floor Mount Double Flush Mount Double Wrap-Over-Edge

5 ft. Standard/Pit Rail	Powder Coated Safety Yellow Galvanized	Double Top Floor Mount Double Flush Mount Double Wrap-Over-Edge
4 ft. Standard/Pit Rail	Powder Coated Safety Yellow Galvanized	Double Top Floor Mount Double Flush Mount Double Wrap-Over-Edge
3 ft. Standard/Pit Rail	Powder Coated Safety Yellow Galvanized	Double Top Floor Mount Double Flush Mount Double Wrap-Over-Edge
2 ft. Standard/Pit Rail	Powder Coated Safety Yellow Galvanized	Double Top Floor Mount Double Flush Mount Double Wrap-Over-Edge

Information Needed to Quote

By providing some basic information we can provide you with a custom proposal. Pictures and sketches are very helpful and if you prefer to speak with a fall protection expert just call or send us an e-mail. Fill out our [Request a Quote](#) form to send us your information.



Phone: (951) 465-7386

Websites:

<https://caisafety.com>

Email:
webstore@caisafety.com

Some of Our Clientele



BURNS & MCDONNELL



FLUOR

